



# GAT MONTHLY MEMBERSHIP PROGRESS REPORT

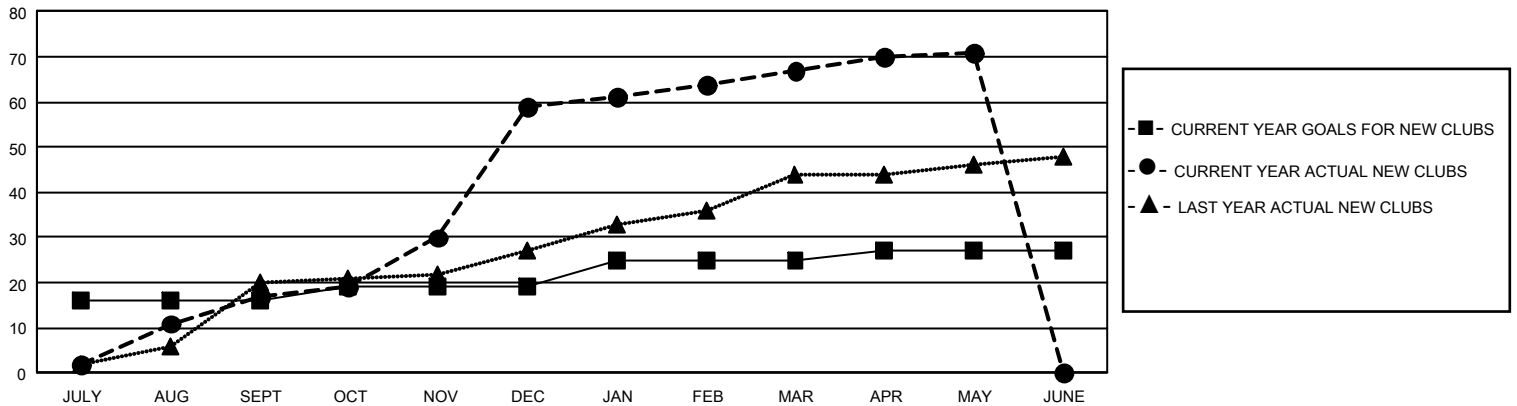
Results as of: 5/31/2025

## GMT Constitutional Area 5 - M, Group F

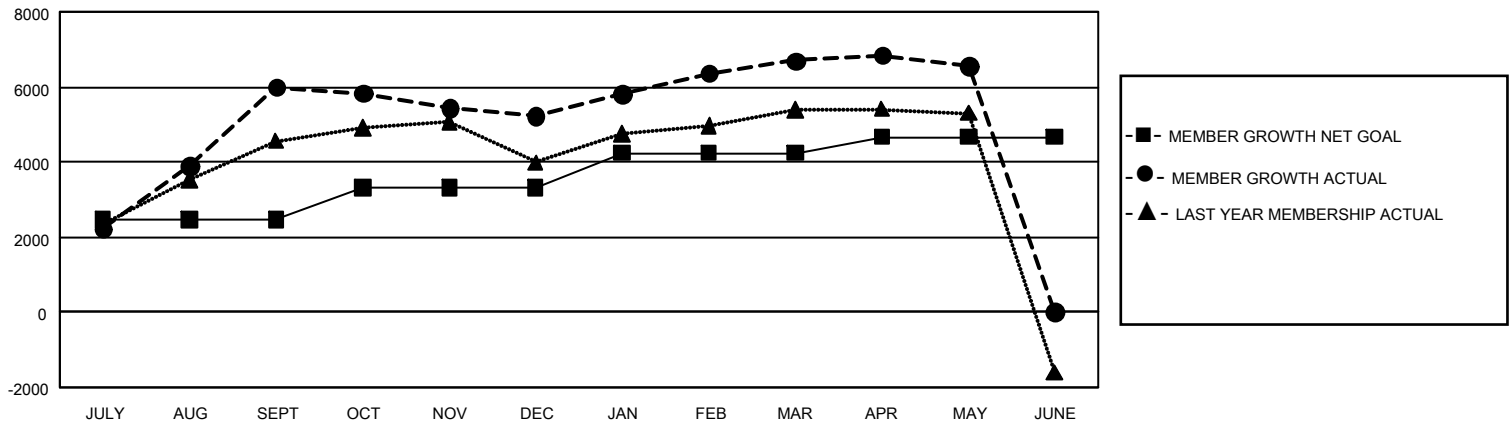
REPORT DOES NOT INCLUDE CLUBS IN UNDISTRICTED AREAS.

Clubs				Members			
RESULTS FOR 2024-2025				RESULTS FOR 2024-2025			
QUARTER	NEW CLUB GOAL	NEW CLUBS	DROPPED CLUBS	QUARTER	MEMBER GROWTH NET GOAL	MEMBER GROWTH ACTUAL	DROPPED MEMBERS ACTUAL (including transfers)
JULY/AUG/SEPT	48	17	5	JULY/AUG/SEPT	2466	7,415	897
OCT/NOV/DEC	9	42	4	OCT/NOV/DEC	836	1,870	2,572
JAN/FEB/MAR	18	8	3	JAN/FEB/MAR	938	2,119	217
APR/MAY/JUNE	6	4	1	APR/MAY/JUNE	430	342	425

GOALS AND ACTUAL NEW CLUBS CUMULATIVE



GOALS AND ACTUAL MEMBERS CUMULATIVE



DROPPED CLUBS: 13

1,138 CLUBS OF 1,275 ADDED  
1 OR MORE NEW MEMBERS

### GENDER DISTRIBUTION

MALE	31,067 (66.22%)
FEMALE	15,834 (33.75%)
NON BINARY	0 (0.00%)
PREFER NOT TO ANSWER	17 (0.04%)

### DROPPED MEMBERS

DECEASED	90
CLUB CANCELLED	55
OTHER	3,959
<b>TOTAL</b>	<b>4,104</b>

[CLICK HERE FOR  
CUMULATIVE MEMBERSHIP  
DATA](#)

TOTAL FAMILY UNIT MEMBERS	3,399
FAMILY MEMBERS PAYING HALF DUES	2,142